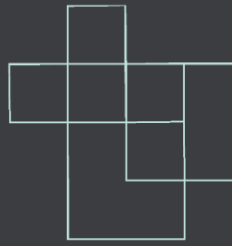


# PUNN

SMART WORKSPACE

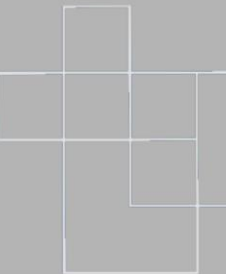


# PUNN

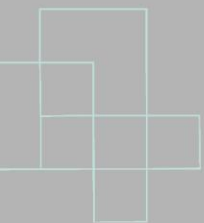
# SMART WORKSPACE

To integrate holistic design, technology,  
and sustainability to create a modern  
workspace that inspires creativity,  
collaboration, and productivity

**for the new working generation.**



PUNN



# BRAND CHARACTER

- High Quality of Life
- Creative & Innovative
- Best Value for Money

SMART



SHARING



SENSIBLE



MODERN



PUNN



SMART WORKSPACE

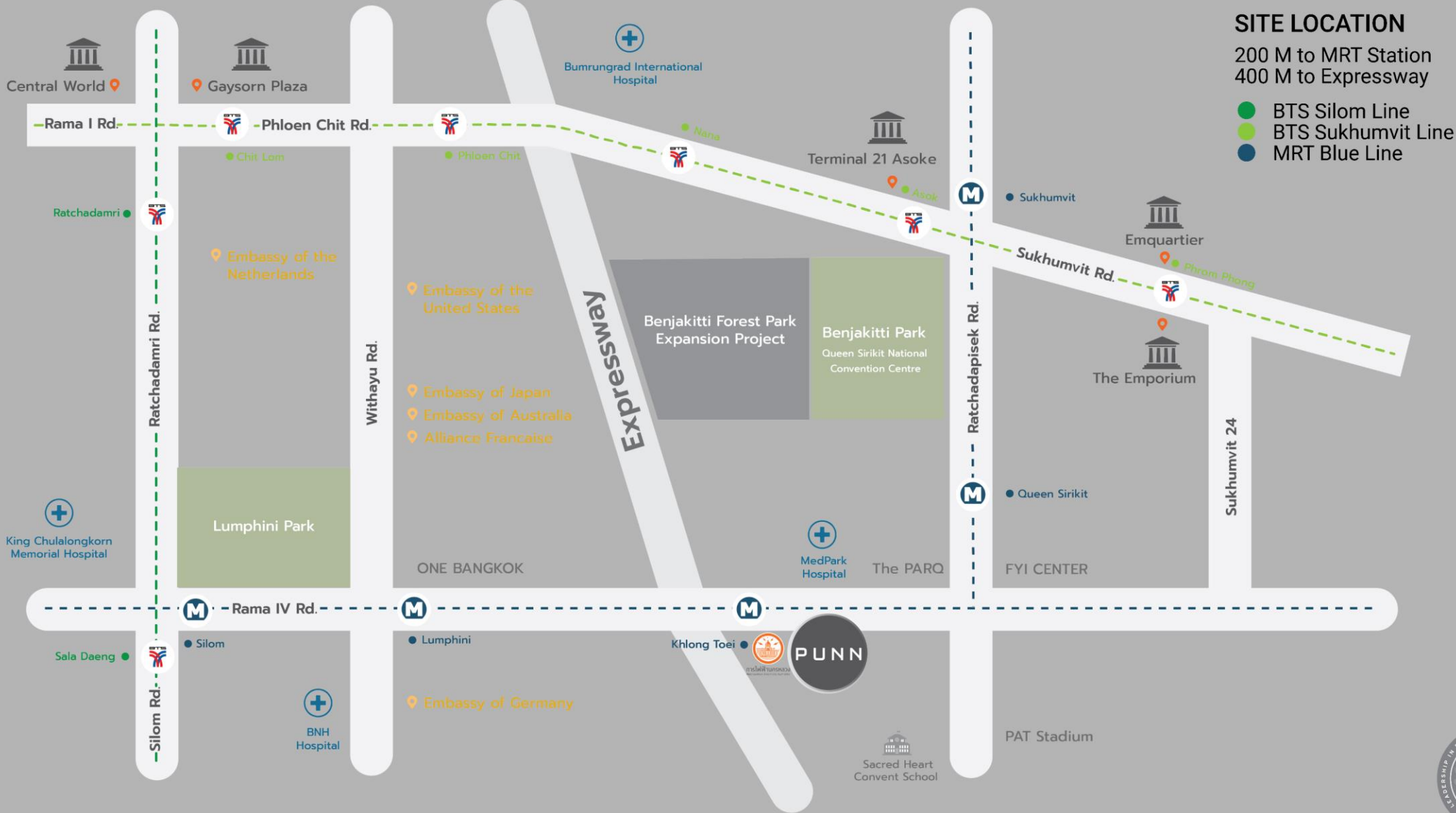
---

A NEW GENERATION  
OF **WORKSPACE**

FOR A NEW GENERATION  
OF **WORKING PROFESSIONALS**

---





PUNN

SMART WORKSPACE



PUNN

SMART WORKSPACE



PUNN

SMART WORKSPACE



# PUNN

# SMART WORKSPACE



PUNN

SMART WORKSPACE



PUNN

SMART WORKSPACE



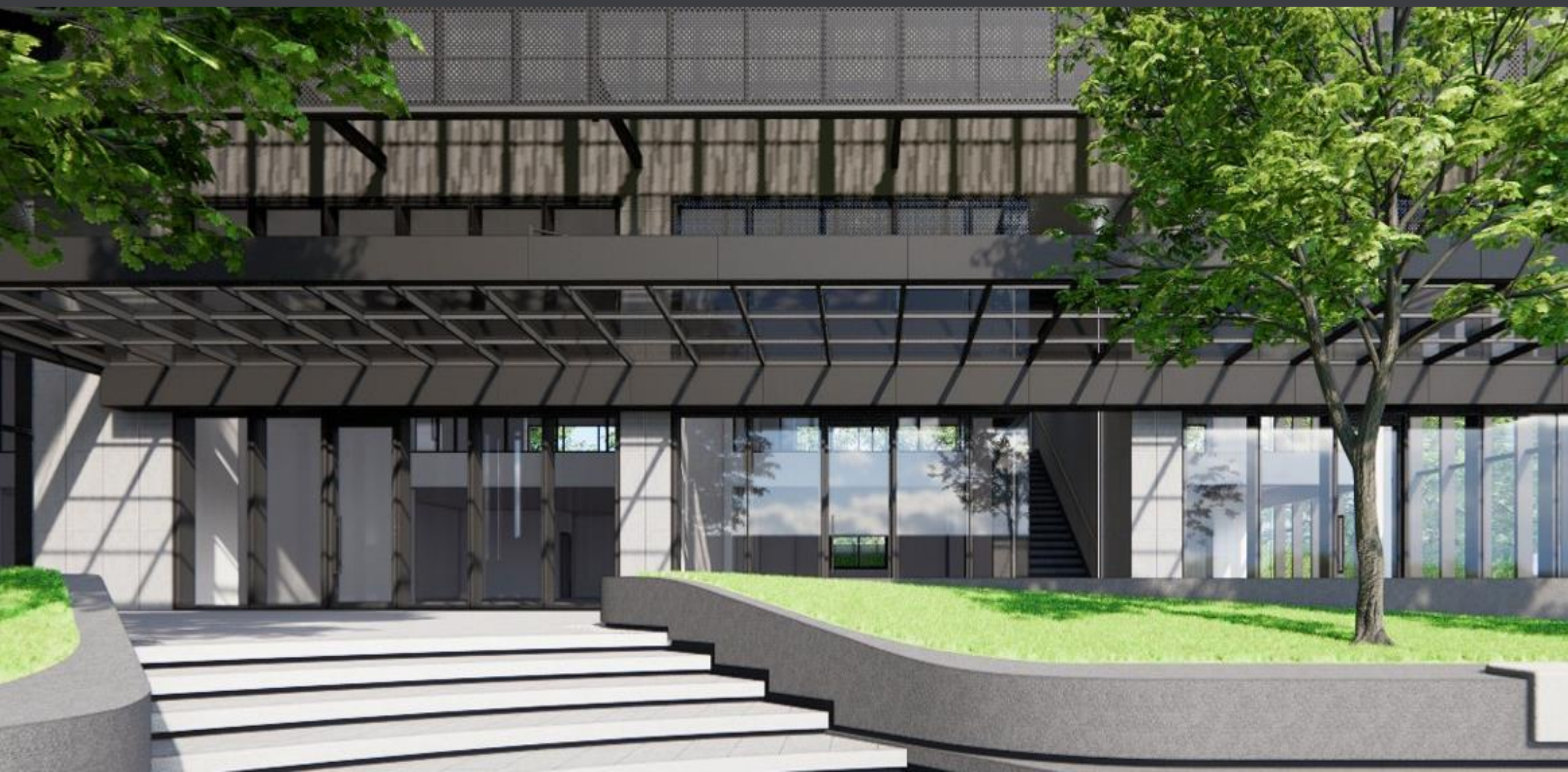
PUNN

SMART WORKSPACE



PUNN

SMART WORKSPACE



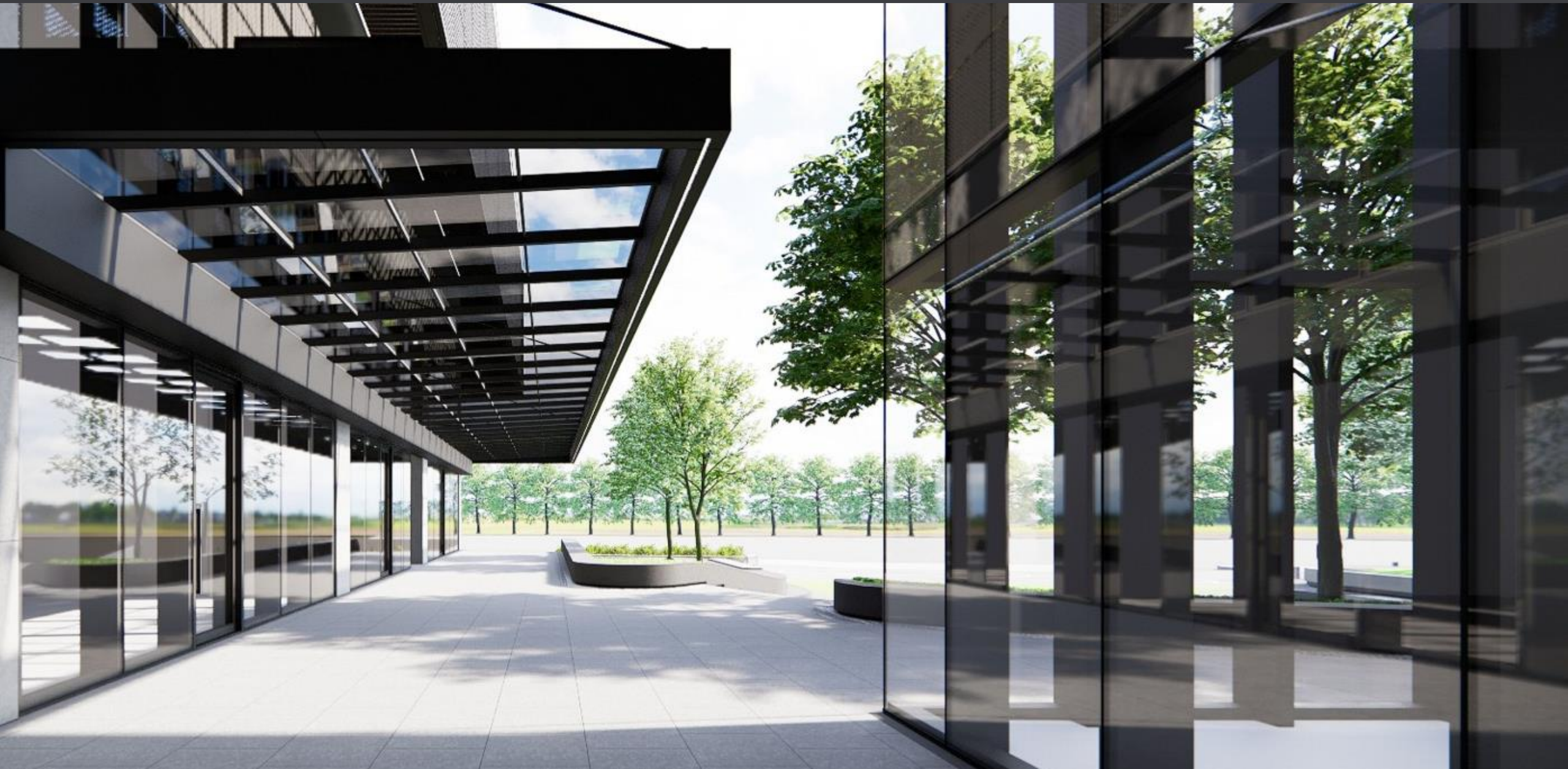
PUNN

SMART WORKSPACE



PUNN

SMART WORKSPACE



PROJECT  
HIGHLIGHTS



**FLEXIBLE AIR  
CONDITIONING HOURS**  
LEED Gold Certificated



**LAMINATED  
IGU GLASS**  
LEED Gold Certificated



**SMART  
LIGHTING**  
LEED Gold Certificated



**THERMAL  
COMFORT**  
LEED Gold Certificated



**COMMON PANTRY &  
DRINKING WATER**  
LEED Gold Certificated  
And WELL Building  
standard



**TURNSTILE ACCESS &  
LIFT DESTINATION CONTROL**  
LEED Gold Certificated

# PUNN

Completion : Q4 2023

Lettable Area : Approx. 22,500 sq.m.

Ceiling Height : 2.80 m.

Number of Floors : 28 floors

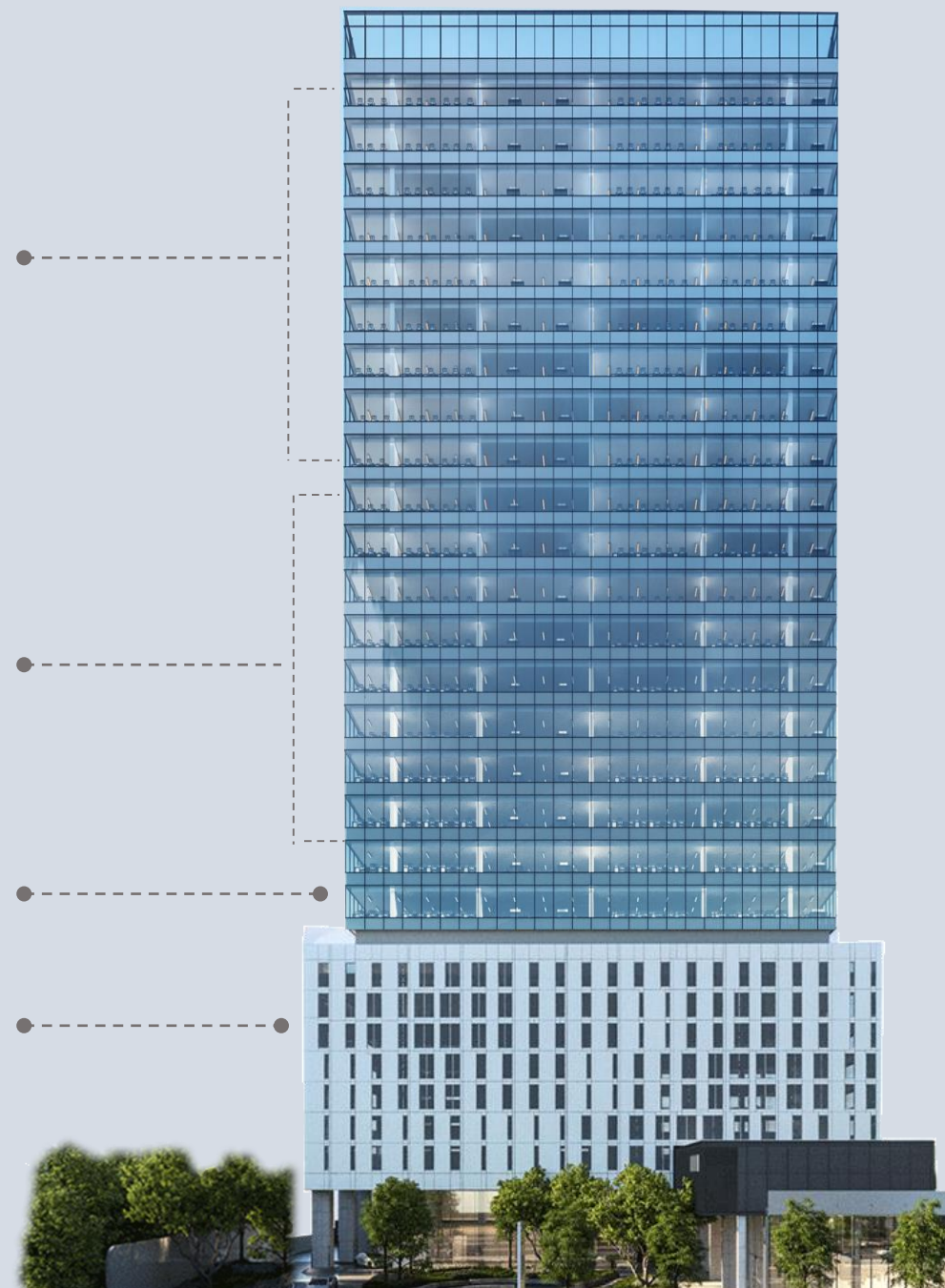
**Office High Zone**  
20th – 28th Floor  
Approx. 1,174 sq.m. / floor

**Office Low Zone**  
10th – 19th Floor  
Approx. 1,174 sq.m. / floor

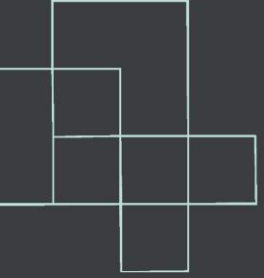
**Co-working Space**  
9th Floor

**Parking 361 Slots**  
2nd – 7th 308 Slots / Basement 53 Slots

**Retail : 1st & 2nd Floor**  
Approx. 820 sq.m.



PUNN



# MASTER PLAN



RAMA IV ROAD

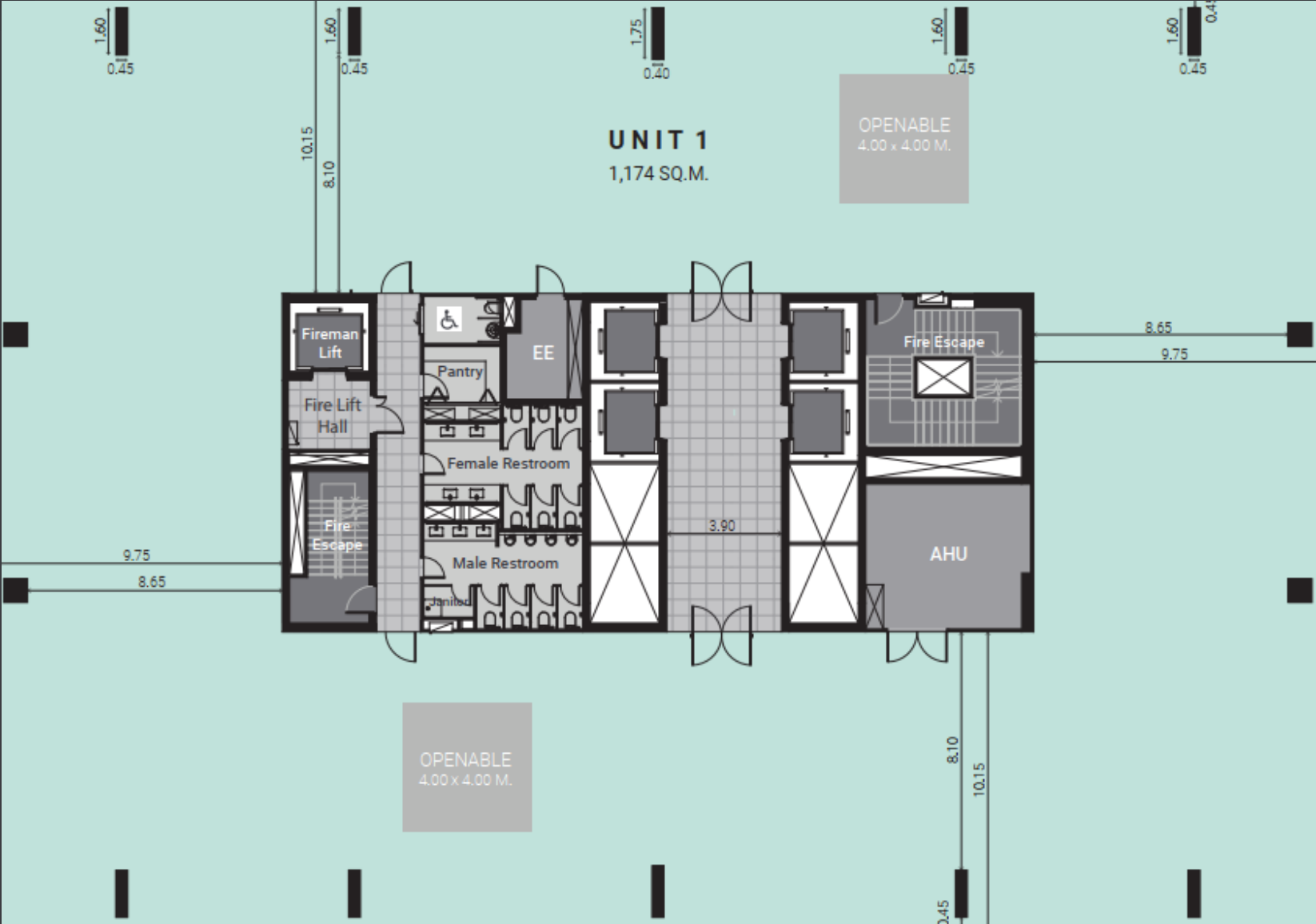


200 m. To Klong Toei MRT station

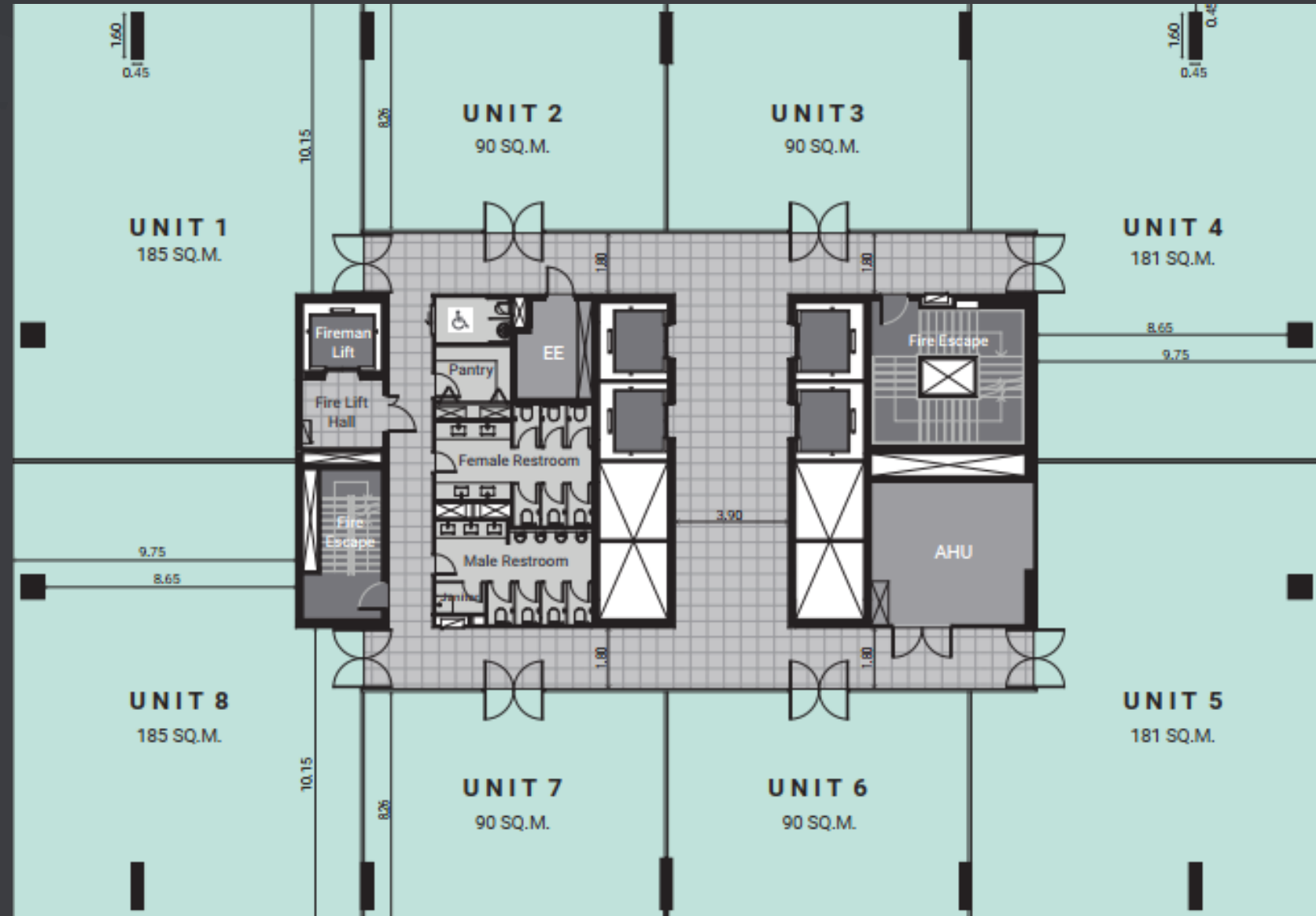


TYPICAL FLOOR PLAN

- Whole Floor
- 1,174 Sq.m.
- Panorama view
- Column Free Floor Plate
- Knock out panel for internal staircase



# TYPICAL FLOOR PLAN



Column free floor plate

PUNN

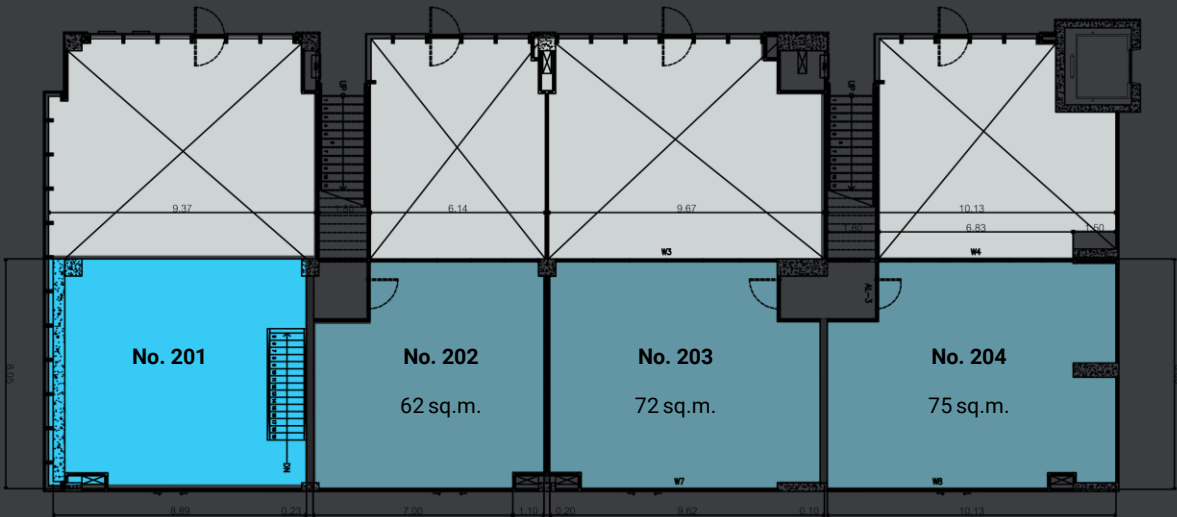
SMART WORKSPACE

RETAIL  
FLOOR PLAN

1<sup>st</sup> Floor

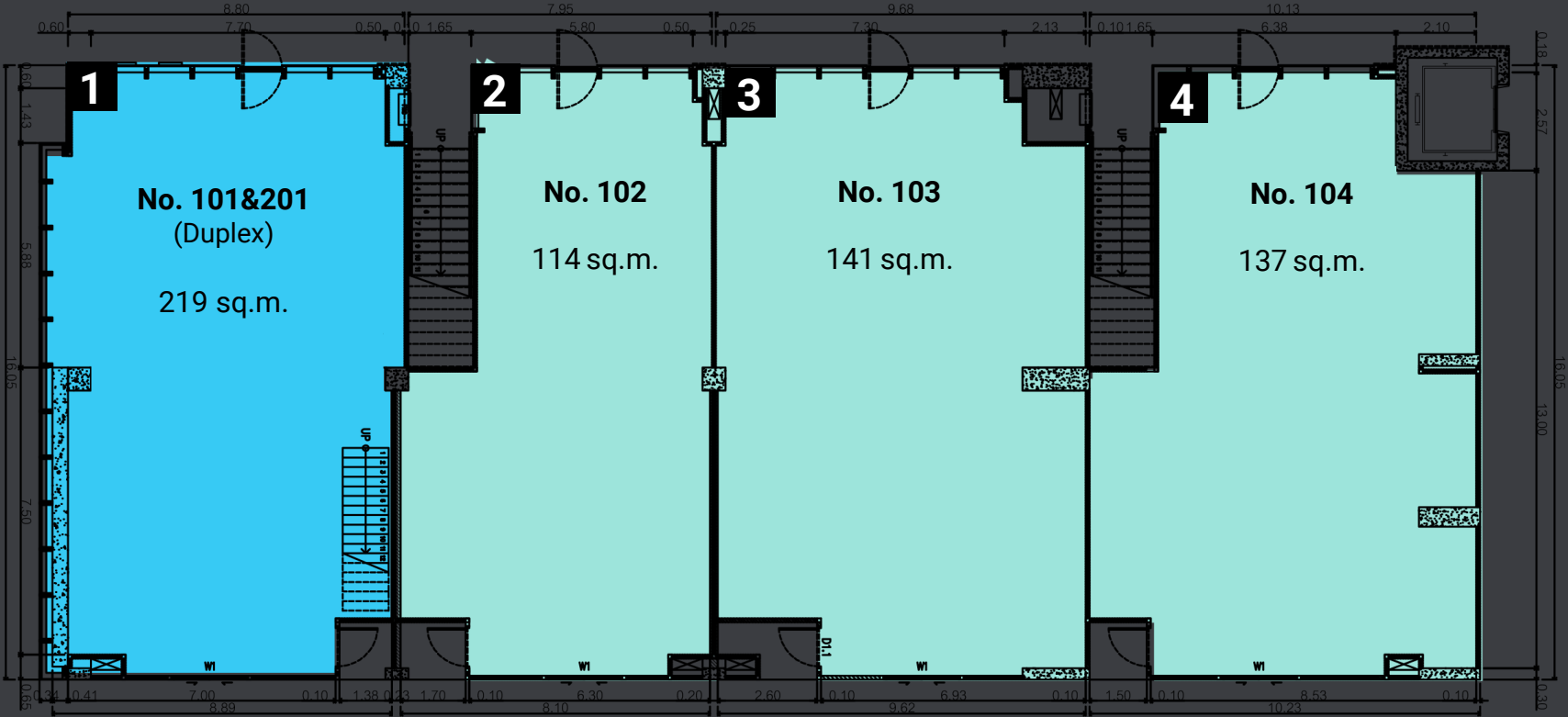


2<sup>nd</sup> Floor



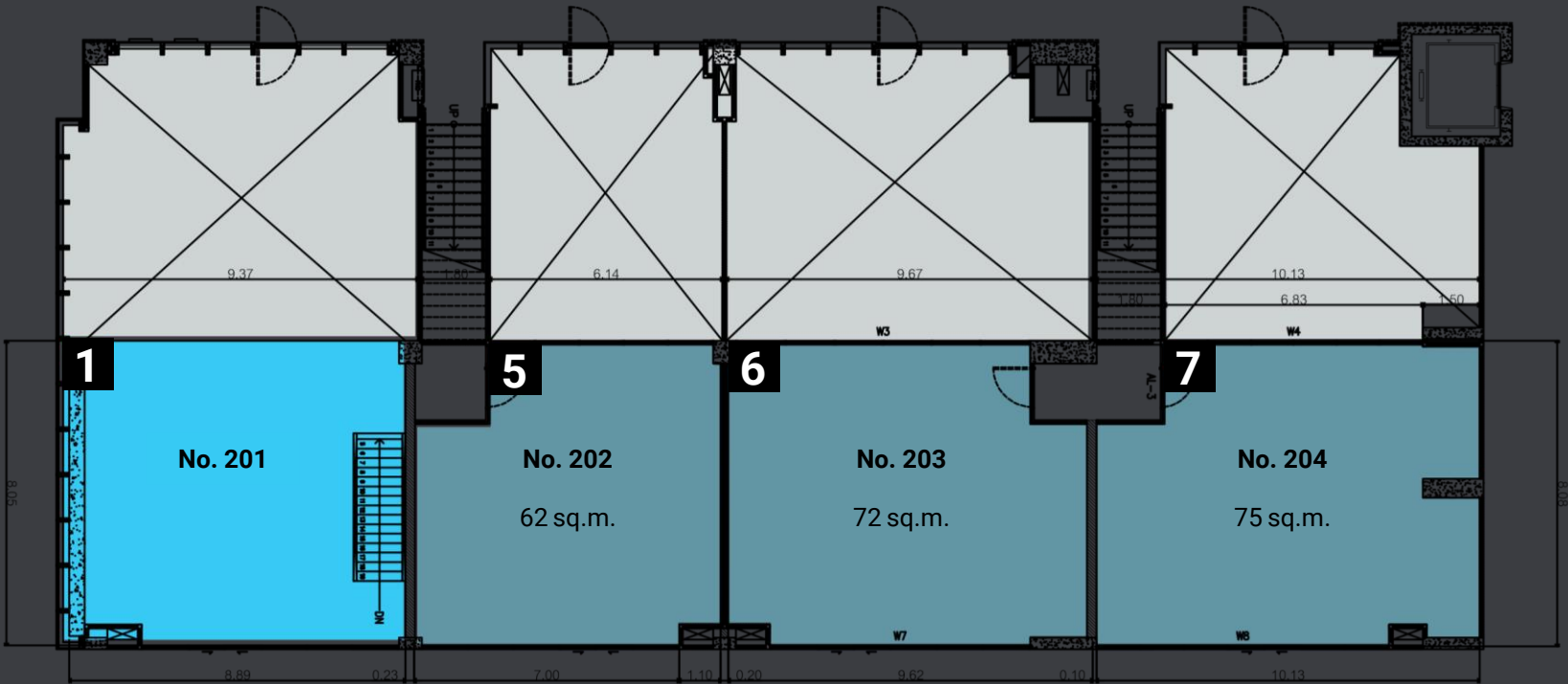
RETAIL  
FLOOR PLAN

1st Floor



RETAIL  
FLOOR PLAN

2nd Floor



# PUNN

## OUR SUCCESS



IN  
COLLABORATION  
WITH

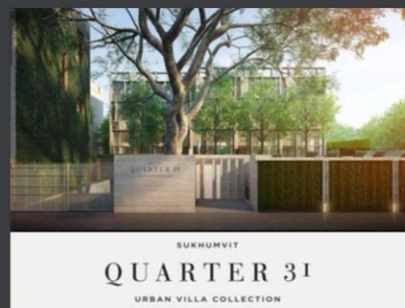
# NYE ESTATE

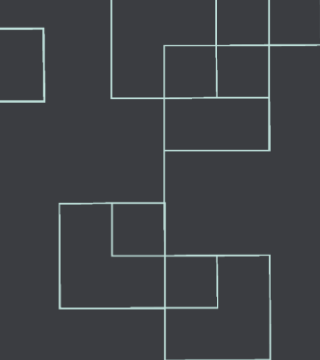
## SMART WORKSPACE

LPN has been offering high-quality of fully integrated urban housing development projects to Thai society through 129 projects over the course of 30 years. Given that our priority is the quality of lives of the people, employees, customers, and society as a whole, we are determined to drive our organization towards “Sustainable Development”.



NYE ESTATE Co., Ltd. is one of Thailand's leading property developers with projects outstanding in striking designs that blend seamlessly with functionality, innovation, quality, and green commitment to society.





**PUNN**  
SMART WORKSPACE

THANK YOU

